

CUBESPACE



SPORTS HALL IN KRUPINA

Project name:

Sports hall and back facilities and offices of E. M. Šoltésová primary school in Krupina

Investor:

Municipality of Krupina

General contractor:

CUBESPACE s. r. o.

Project preparation, all stages of project documentation, demolition of the existing building, foundations, manufacture and assembly of atturnkey construction

Construction start / use permit: March 2016 / August 2016

CUBESPACE s. r. o.

+420 733 353 718 | info@cubespace.eu

Office:

Švábky 52/2 | CZ - 180 00 | Prague 8

Registered office:

Nad Šetelkou 481 | CZ - 180 00 | Prague 8

www.cubespace.eu

Introductory word from the mayor

Dear friends of sports!

In 1983, the then II primary nine-year school in Krupina has been given a gym for use; its designed lifecycle was 25 years. The building was constructed as “voluntary project”; this meant 80% of the costs of construction were allocated from the budget of the Municipal National Committee and 20% of the costs of construction were covered by free work of businesses and citizens of Krupina. The total value of the gym was CZK 3,850,000. After that, this new gym was used by students and the general sporting public for 32 years. On 1 April 2015, the Regional Authority for public health in Zvolen issued an order prohibiting the use of the gym and the school closed down the gym definitely upon the order of the Municipality of Krupina.

Thanks to an initiative of the Mayor of the municipality of Krupina and officials of sports teams, things moved forward following several working meetings between athletes and MPs for the Region of Zvolen. At meetings of the Municipal Board of Representatives in Krupina, this unfavourable situation was resolved finally and the construction of a new sports hall – a gym was approved and a public tender was announced. The winner of the tender was CUBESPACE, s.r.o., Prague, and the contract with this company for the construction of the sports hall – a gym was executed on 28 May 2016 for a total investment of EUR 1,073,141.97 with VAT. The Municipal Board of Representatives approved a loan

A word from the project manager

After we won the tender for demolition, manufacture and construction of a sports hall in Krupina in Slovakia in 2015, I have been entrusted with managing the construction of the lower structure and the construction of a new building and back facilities and offices of the Sports Hall in Krupina. It has been a personal challenge for me to take up an order in the environment of a foreign investor, with different technical standards. I have used my experience from managing constructions in Slovakia and I have targeted all my efforts at achieving the objective of completing the construction at the quality and on the scheduled completion date to the satisfaction of the investor – the municipality of Krupina. I was aware that such construction could not be completed without close mutual co-operation with the investor and its technical management, based on mutual trust. Without these pre-requisites, we would not be able to complete the work on time together; the lower structure started in March 2016 and the acceptance procedure was carried out in mid-

facility of EUR 873,142, and the mayor of the town managed to obtain the remaining EUR 200,000 through a project from the Ministry of Education of the Slovak Republic headed by Juraj Draxler, the minister.

On 12 August 2015, demolition works of the original gym commenced; they lasted until 13 October 2015. After the building permit was issued, the general contractor – CUBESPACE, s. r. o. Praha along with sub-contractors – commenced construction works on the sports hall – a gym for E. M. Šoltésová primary school on 8 February 2016. The companies complied with demanding conditions caused by time pressure as well as weather conditions and the use permit for the building was issued successfully on 19 August 2016.

We can proudly extend our thanks to CUBESPACE, s. r. o. Praha, as well as to all subcontractors of the construction, the project manager, the technical supervisor and to all helpful people who contributed to the construction of the new gym – sports hall. Students of the E. M. Šoltésová primary school, sports clubs for children and youths as well as for the general public of our town and district of Krupina will be able to use it.

Ing. Radoslav Vazan
Mayor of Krupina



August 2016. That is why, our thanks go to the management of the municipality of Krupina and to important contractors who were involved in our joint efforts to complete the construction successfully on time and to the required quality standards, specifically to Femont, Bobistav and Dadostav. We would also like to thank the headmaster of E. M. Šoltésová primary school who showed particular personal interest in the progress of works throughout the construction.

I would like to make a final wish: may all future athletes of the municipality of Krupina and the surroundings use the sports hall with back facilities and offices to their full satisfaction and may the new beautiful sports facility bring them a lot of success in sports.

Ing. Jiří Zach
Head of construction, CUBESPACE s. r. o. – general contractor

Introductory word from the headmaster

Motto:
“If you learn in order to remember, you will forget. If you learn in order to understand, you will remember.”
(Chinese proverb)

History of E. M. Šoltésová primary school dates back to the 1950s. The main mission of schools is to encourage, inspire and empower students to success and to provide basic education, upbringing and prepare them for further study and practice.

For children with a talent for sports, we have created sports classes specialising in football for boys and volleyball for girls. Introduction of sports classes starting in Grade 5 has become a part of the School Educational Programme and has a 13-year-long tradition. The construction of a new gym allows us to offer higher-quality options for development of motoric skills and capabilities as well as superior preparation of students for sports competitions.

First-class school facilities allow us to accomplish excellent results in various competitions and School Olympics. Qualified teachers work with students in extra-curricular activities, they take them for class trips, sports training courses and they bring them up to a healthy lifestyle.

The school engages in international, regional as well as local projects. Project-based education, creation and presentation of projects are a part of the educational process of vast majority of subjects and life at school. Project preparation, implementation and deliverables develop, to a great extent, independence and creativity of students, their critical thinking, communications skills and ability to search for information. Students grasp the practical

meaning of the study better, they learn to plan their own work and to be responsible for it.

The school also runs the Stonožka school club known for its traditionally untraditional events. The club activities are attractive and varied and the guides try to teach children healthy communication, politeness, mutual help, empathy and joy from freely spent time.

The Council of Parents Association of the E. M. Šoltésová primary school in Krupina works at the school; its members include representatives of parents from individual school classes. Meetings of parents are organised as joint meetings of parents from individual classes and teachers of the school. Every year, we organise many events for them: Open Doors Days, creative workshops, public presentations of student work with participation of parents (academy, exhibitions, and project presentations). The school website keeps parents of students informed about school life on a regular basis.

The construction of a new sports hall meant a great contribution to the development of motoric skills and capabilities of students. I believe our students will continue to represent our school and town in an excellent way in sports competitions. We extend our thanks to every person who has contributed to the fact that this sports facility can stand near our school. I would like to appreciate good co-operation with contractors during the construction.

Mgr. Maroš Skopal
Headmaster



CUBESPACE

CUBESPACE s. r. o. is a young, dynamic design and manufacturing company. It conducts a wide spectrum of activities from architectural designs to their construction. The company was founded in 2007. The idea of establishing production of the company’s proprietary modular system with a steel load-bearing frame structure, manufactured using superior-quality architectural form and first-class craftsmanship has evolved from combined know-how of the founding members. An experienced team of architects, civil engineers and technicians tackles project preparation. It accompanies clients through all stages of project documentation and building approval procedures to the construction of the client’s project. Continuously, CUBESPACE

monitors options to improve the structural characteristics and details of the modular buildings it manufactures. In particular, we examine the possibility of using modern structural materials and technologies to render our buildings compliant with the strictest present and future requirements. CUBESPACE has two manufacturing plants in the Czech Republic in which it manufactures and assembles modules before shipping them to clients. A new core segment in the company’s portfolio is its proprietary production of steel halls.

Project construction stages

CONSTRUCTION STUDY

A construction study was drafted in order for the investor to organise its ideas about the project of a new sports hall and to check the spatial layout. This initial documentation contains basic horizontal and vertical layout of the required functions, the structure's placement on the plot and architectural design of the future project.



Study: Visualisation



Study: Visualisation



DEMOLITION DOCUMENTATION

As the new building of the sports hall replaced the original hall, it was necessary to demolish the existing gym of the primary school before construction. For that reason, construction demolition documentation was drafted and was used to obtain necessary permits.



Study: Visualisation

DEMOLITION OF THE EXISTING HALL

The demolition of the original gym was carried out during summer holidays in order to minimise the impact of the construction upon school work. Debris from demolition was sorted and disposed of in an appropriate manner.



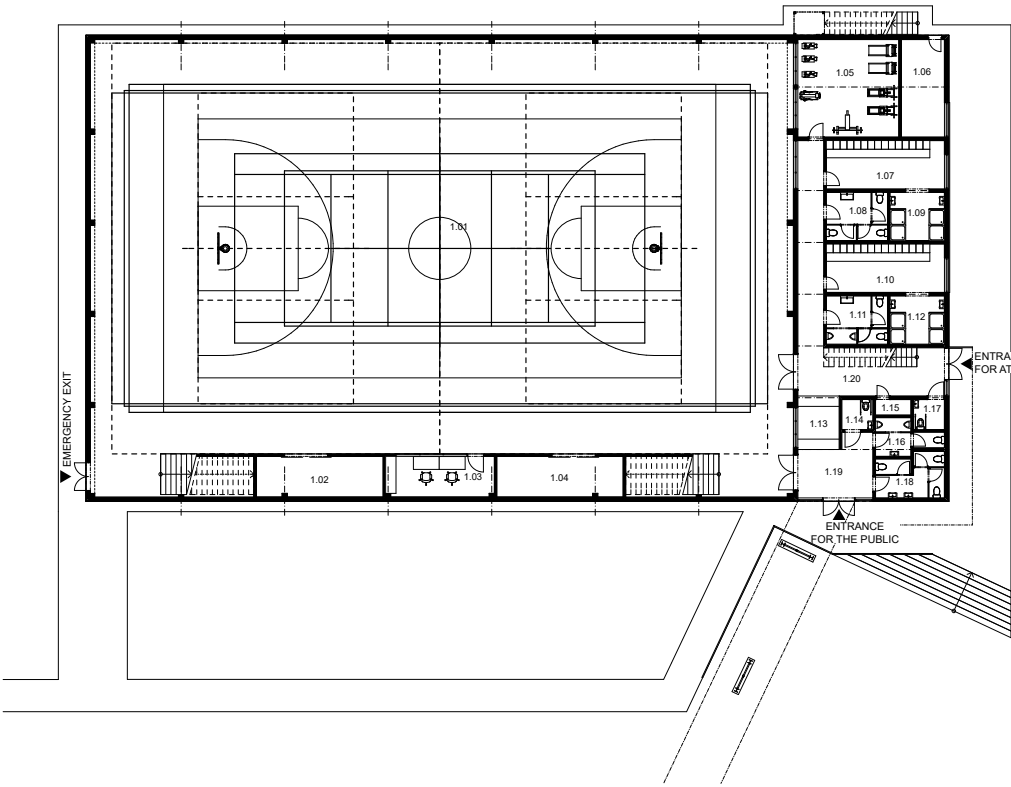
Project construction stages

DOCUMENTATION FOR ZONING DECISION AND BUILDING PERMIT

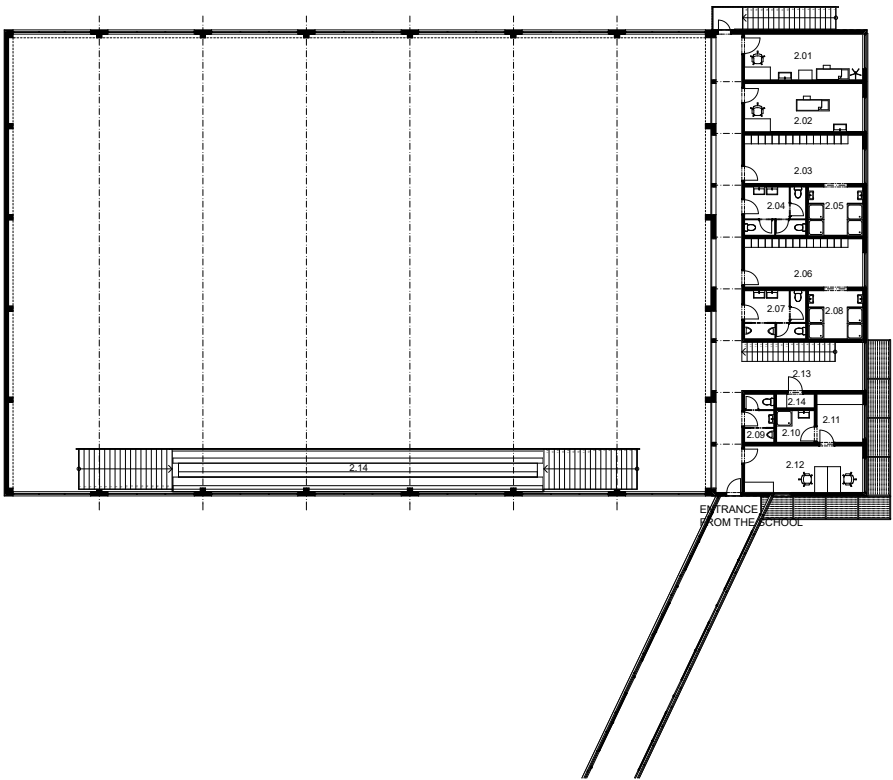
In order to get the construction approved by parties involved in the proceedings and by the affected state administration authorities, it was necessary to draft detailed documentation of the sports hall. The documentation described the complicated location of the building – this required careful assessment of external impacts such as, for example, noise and maintaining daylight and access of sunshine into neighbouring buildings. Complicated foundation conditions – clay subsoil – and troubles with points available for connection to public utilities networks also made the design difficult. All individual decisions were discussed with the investor and the future owner of the structure. Despite all issues, the documentation succeeded finally in the joint zoning and building permit proceedings.

PROJECT FOR EXECUTION

Before the construction commenced, detailed designs and descriptions of the project had to be drafted and bills of quantities had to be added for each part. Many experts of various specialisation from the Czech Republic and Slovakia worked together. Good teamwork helped secure a seamless transition to the construction stage.



LIST OF ROOMS 1 ST ABOVE-GROUND FLOOR		
No.	Room name	Area in sq. m
1.01	Sports hall	997,6
1.02	Warehouse of sports equipment	17,2
1.03	Offices for referees	14,7
1.04	Warehouse of sports equipment	17,1
1.05	Fitness centre	33,1
1.06	Technical room	14,1
1.07	Cloakroom ladies	19,2
1.08	WC ladies	9,9
1.09	Shower ladies	8,8
1.10	Cloakroom men	19,2
1.11	WC men	9,9
1.12	Shower men	8,8
1.13	Reception	7,4
1.14	Disabled-access WC	3,2
1.15	Cleaning room	1,8
1.16	WC men	6,4
1.17	Disabled-access WC	3,2
1.18	WC ladies	9,8
1.19	Entrance hall	14,2
1.20	Corridor	42,1
Total		1 257,7



LIST OF ROOMS 2 ND ABOVE-GROUND FLOOR		
No.	Room name	Area in sq. m
2.01	Medical room	18,2
2.02	Massage	19,2
2.03	Cloakroom ladies	19,2
2.04	WC ladies	9,9
2.05	Shower ladies	8,8
2.06	Cloakroom men	19,2
2.07	WC men	9,9
2.08	Shower men	8,8
2.09	WC men	4,8
2.10	Shower	4,1
2.11	Cloakroom	7,5
2.12	Teacher's room	18,5
2.13	Corridor	53,5
2.14	Bleachers for 100 viewers	76,2
2.15	Cleaning room	1,8
Total		279,6

Project construction stages

CONSTRUCTION

The sports hall building has two sections: a one-storey hall and a two-storey section containing back facilities and offices. The hall with an internal ground-plan of dimensions of 40 x 24 m and a variable clearance ranging from 6.8 to 7.8 m can be used for the following sports: 1 volleyball playground, 3 practicing playgrounds for volleyball, futsal, basketball and tennis. Furthermore, the hall houses a warehouse of sports equipment, an area for referees and elevated bleachers for 100 viewers. The two-storey building contains all entrances and social back facilities, comprising cloakrooms, showers and WC, each offering a capacity for 15 athletes/students. There is a public WC and a disabled-access WC, a teacher's room with social facilities, a medical room, a fitness centre, a technical room and a reception – the idea is that petty packed merchandise for athletes/students will be sold here. The clearance of both floors containing the gym's back facilities and offices is 2.7 m. The back facilities of the sports hall are made of a modular set; the ground floor and the 1st above-ground floor contain nine modules with dimensions of 9x3 m each. The 2nd above-ground floor contains a bridge connecting the gym with the current primary school. The bridge provides covered entrance to the building for students and teachers directly from a staircase landing of the existing school building.

