

CUBESPACE



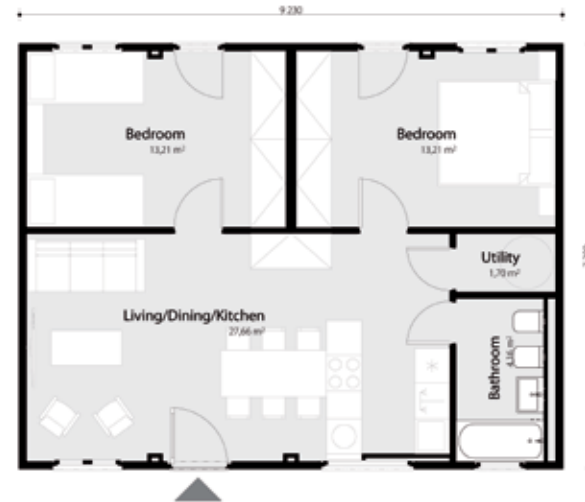
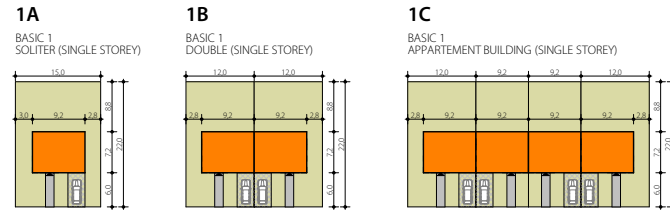
CATALOGUE FAMILY HOUSES

We offer catalogue family houses built using the CUBESPACE modular system in several sizes and layouts to match client's needs. Houses can be erected on the land plot as stand-alone buildings with one or two storeys. You can also combine the houses to form semi-detached and terraced houses. We will tailor the roof shape and material for wall cladding to meet client's specific requirements. The first and foremost benefit of our system is fast delivery and full assembly at the site, several options for the building's foundations and also the option to add or remove modules depending on the changing accommodation capacity requirements. Houses or their parts can also be relocated to other sites. That way, the family house changes in line with the family's needs.

CUBESPACE

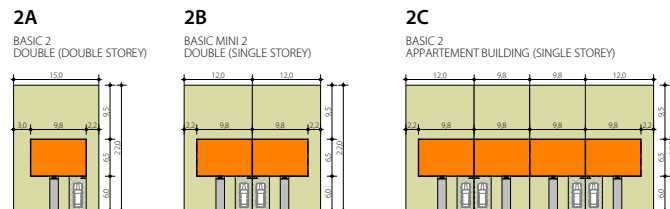
Basic 1

The house is built from 4 modules with their longitudinal axis at a right angle to the road. The floor area is 60 sq. m. The house can have a flat or a saddle roof. The entrance leads directly to the living room and all other rooms – 2 bedrooms, a bathroom and a technical room – are accessible from the living room. The garden can be reached from both bedrooms; for stand-alone or semi-detached houses, the garden is also accessible from the living room. The apartment has been designed for 4 residents (ideally). The house can be erected as a stand-alone structure, as a semi-detached or a terraced house.



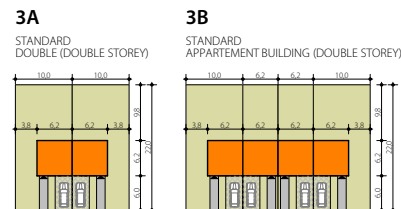
Basic 2

One-storey house is built from 4 modules, with their longitudinal axis at a right angle to the road. The floor area is 57.5 sq. m. The house can have a flat or a saddle roof. The entrance leads to the corridor and the main living room can be reached from the corridor. Other rooms – 2 bedrooms and a bathroom – are also accessible from the corridor. The technical room is accessible from the outside. The garden can be reached from the living room. The apartment has been designed for 4 residents (ideally). The house can be erected as a stand-alone structure, as a semi-detached or terraced house.



Standard 1

The house is built from 5 modules – 2 and a half modules for each floor. The longitudinal axis is at a right angle to the road. The floor area is 65.2 sq. m. The house can have a flat or a saddle roof. The entrance leads directly to the living room and all other rooms – a toilet, a technical room and a staircase, 2 bedrooms and a bathroom on the first floor – are accessible from the living room. The garden can be reached from the living room. The apartment has been designed for 4 residents (ideally). The house can be erected as a stand-alone structure, as a semi-detached or a terraced house.





CUBESPACE s. r. o.
Studio:
Registered Office:

+420 733 353 718 | info@cubespace.eu
Švábky 52/2 | 180 00 | Praha 8
Nad Šetelkou 481 | 180 00 | Praha 8

www.cubespace.eu